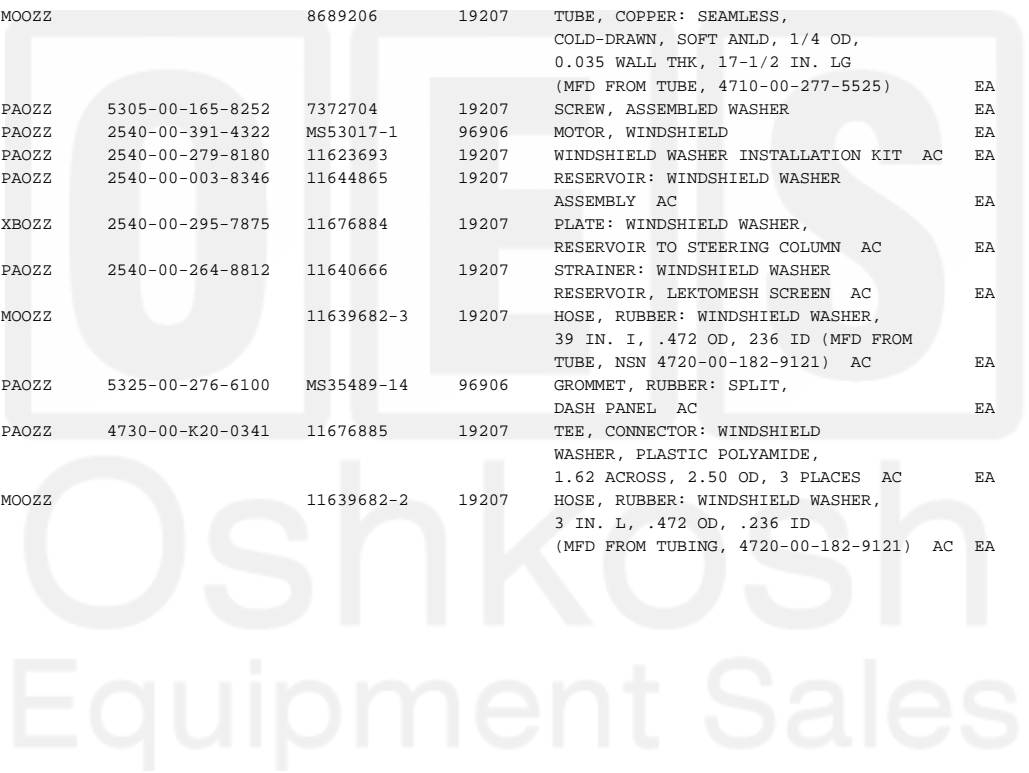


Current part is item (2) on diagram. Available at www.oshkoshequipment.com

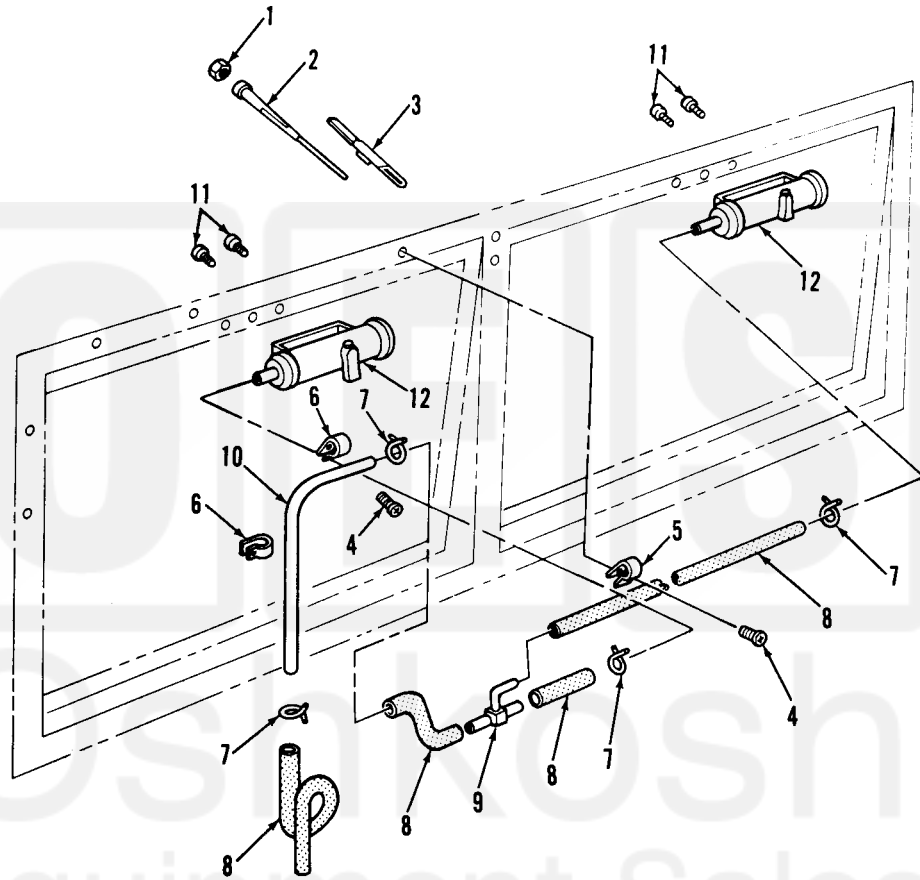
(1) FIG. NO.	(2) ITEM NO.	(3) SMR CODE	(4) NATIONAL STOCK NUMBER	(5) PART NUMBER	(6) FSCM	(7) DESCRIPTION	(8) U/M	(9) INC IN UNIT
-----------------	-----------------	-----------------	------------------------------	--------------------	-------------	--------------------	------------	--------------------

2202-ACCESSORY ITEMS

329	1	PAOZZ	5310-00-705-8965	7058965	19207	NUT, PLAIN, CAP: CLAMPING, WINDSHIELD WIPER ARM TO MOTOR	EA	2
329	2	PAOZZ	2540-00-050-0810	MS53049-1	96906	ARM, WINDSHIELD WIPER: ADJ, 7-1/2 CLOSED, 12 EXTENDED	EA	2
329	3	PAOZZ	2540-00-640-2567	MS53048-10	96906	BLADE, WINDSHIELD WIPER: 10 IN. LG.	EA	2
329	4	PAOZZ	5305-00-855-0957	MS24629-46	96906	SCREW, TAPPING, THREAD FORMING	EA	4
329	5	PAOZZ	5340-00-984-8540	MS21333-102	96906	CLAMP, ELECTRICAL	EA	1
329	6	PAOZZ	5340-00-057-2890	MS21333-3	96906	CLAMP, LOOP	EA	3
329	7	PAOZZ	4730-00-727-9627	7279627	19207	CLAMP, HOSE: WINDSHIELD WIPER HOSE CONNECTIONS	EA	8
329	8	MOOZZ		7331422	19207	HOSE, RUBBER: WINDSHIELD WIPER (1 PIECE 15-1/2 IN. LG, 1 PIECE 7 IN. LG, 1 PIECE 2 IN. LG, 1 PIECE 34 IN. LG) (58 1/2 IN. REQUIRED TOTAL) (MFD FROM HOSE, 4720-00-203-2668	EA	1
329	9	PAOZZ	4730-00-737-2701	7372701	19207	TEE, HOSE: WINDSHIELD WIPER MOTOR LINE	EA	1
329	10	MOOZZ		8689206	19207	TUBE, COPPER: SEAMLESS, COLD-DRAWN, SOFT ANLD, 1/4 OD, 0.035 WALL THK, 17-1/2 IN. LG (MFD FROM TUBE, 4710-00-277-5525)	EA	1
329	11	PAOZZ	5305-00-165-8252	7372704	19207	SCREW, ASSEMBLED WASHER	EA	4
329	12	PAOZZ	2540-00-391-4322	MS53017-1	96906	MOTOR, WINDSHIELD	EA	2
330		PAOZZ	2540-00-279-8180	11623693	19207	WINDSHIELD WASHER INSTALLATION KIT AC	EA	1
330	1	PAOZZ	2540-00-003-8346	11644865	19207	RESERVOIR: WINDSHIELD WASHER ASSEMBLY AC	EA	1
330	2	XBOZZ	2540-00-295-7875	11676884	19207	PLATE: WINDSHIELD WASHER, RESERVOIR TO STEERING COLUMN AC	EA	1
330	3	PAOZZ	2540-00-264-8812	11640666	19207	STRAINER: WINDSHIELD WASHER RESERVOIR, LEKTOMESH SCREEN AC	EA	1
330	4	MOOZZ		11639682-3	19207	HOSE, RUBBER: WINDSHIELD WASHER, 39 IN. L, .472 OD, 236 ID (MFD FROM TUBE, NSN 4720-00-182-9121) AC	EA	1
330	5	PAOZZ	5325-00-276-6100	MS35489-14	96906	GROMMET, RUBBER: SPLIT, DASH PANEL AC	EA	1
330	6	PAOZZ	4730-00-K20-0341	11676885	19207	TEE, CONNECTOR: WINDSHIELD WASHER, PLASTIC POLYAMIDE, 1.62 ACROSS, 2.50 OD, 3 PLACES AC	EA	1
330	7	MOOZZ		11639682-2	19207	HOSE, RUBBER: WINDSHIELD WASHER, 3 IN. L, .472 OD, .236 ID (MFD FROM TUBING, 4720-00-182-9121) AC	EA	1



Current part is item (2) on diagram. Available at www.oshkoshequipment.com



TA 031425

Figure 329. Windshield wipers, motors.